



## **DEEP CREEK WATERSHED FOUNDATION BOARD ELECTS NEW PRESIDENT**

On May 9<sup>th</sup>, at a regularly scheduled meeting of the Board of Directors of the Deep Creek Watershed Foundation (Foundation), I was selected to succeed David Myerberg as the President of the Foundation effective June 1, 2022. I am both honored and humbled to assume this role in a really great organization.

I want to first sincerely thank David for the three plus years of dedicated service he has provided to the Foundation knowing full well he has spent countless hours supporting the Foundation's efforts in multiple ways. Thank you, David, for a job well done! Fortunately, David has agreed to remain available to the Foundation as an Advisor so his expertise will continue to be available to all of us on the Board of Directors.

I have spent considerable time involved with lake related matters since moving to Garrett County full-time in June 2010. I worked with many others to build the Deep Creek Watershed Management Plan, served five years as the President of the Property Owners' Association of DCL (2013-2018) and was very involved in the creation of the Foundation beginning in early 2016, and have served on the Board since that time.

The Foundation has a great all volunteer Board of Directors and wonderful group of Advisors to support its work. This year, we plan to hold fundraisers at Sipside and The Red Barn as we did last year to further educate folks on what we do and raise funds to support our projects. We will also be exploring more grants than we were able to apply for last year with the help of our grant writer. Lastly, we will carefully choose those promotional opportunities to educate more folks about the Foundation and the importance of its work.

We have several projects underway and will look for more opportunities to further implement the Watershed Management Plan as the Summer progresses. Our methodology of creating Public-Private partnerships to carry out projects has been successful so we will continue to employ that model/process. We will also continue to offer Brunch & Learn Virtual Training

classes and do our best to keep our website fresh and up to date. Our quarterly newsletters will round out our efforts to keep our important donors and would be donors apprised as to what we are doing to advance our mission and goals.

I think our future is a bright one and begin my tenure as President with much optimism! We have wonderfully supportive donors who believe, as we do, that our work is important. We will continue to expand our donor base to ensure we have the resources to support the work that needs to be done to Preserve and Protect For Posterity the Deep Creek Watershed!

Bob Hoffmann, President

---



**DCWF will be hosting our anniversary event again this year on Tuesday, September 13th at the elegant Red Barn on North Glade Road.**

Famed pianist **Thomas Pandolfi**, will provide our entertainment! He began his music career at The Juilliard School where the young prodigy caught the attention of Vladimir Horowitz, who would become his mentor. He is an audience favorite, selling out the world's most prestigious stages, including Lincoln Center Alice Tully Hall, Strathmore, The Kennedy Center, Kiev Opera House, and many others. This versatile pianist has received accolades on everything from Bach to Gershwin, with Morton Gould saying, "It's the finest performance of Gershwin I have heard since the composer himself." His original and virtuosic performances of works such as West Side Story and Phantom of the Opera, are one-of-a-kind, jaw-dropping, and dramatic encores that keep audiences returning to his performances repeatedly. Maestro Pandolfi is a Steinway Artist.

Brenda McDonnell of Ace's Restaurant & Pub, Brenda's Pizzeria and Firewater Kitchen & Bar will be catering the event with a fine dining dinner menu. There will also be a cash-bar cocktail hour beginning at 5:30 pm with hors d'oeuvres.

Our Silent Auction will include local art, certificates to lodging, restaurants and activities as well as many other items. If you have any auction items to donate, we will welcome your contribution.

**Last year's "Sold Out" event strongly suggests you might want to get your tickets early!**

**We are offering a discount online if you book a table for 8 people.**

**You can go to our website and purchase your tickets now!**

If you wish to be one of our sponsors and book a table for 8 people, there are additional discounts. For this information, other questions, or to make a donation for our Silent Auction, please contact Event Chairperson:  
Sandy Bello at 240 321-2524

---

## **A NO-COST WAY TO DONATE TO THE DEEP CREEK WATERSHED FOUNDATION**



We recently learned of a no-cost manner folks can donate to the DCWF and wanted to share it with you.

First, you need to go to [smile.amazon.com](https://smile.amazon.com).

You will be prompted to create a login and password if you do not already have an account with Amazon. There is no cost to set this up. When you do login to [smile.amazon.com](https://smile.amazon.com), locate the Deep Creek Watershed Foundation (DCWF) by searching on the charities block and select it as your charity. Once you do this, when you next choose to shop at Amazon, access Amazon through **smile.amazon.com** and it will automatically put you in a position to shop for all amazon products.

The best part is that when you shop now at Amazon through [smile.amazon.com](https://smile.amazon.com), 0.5% of your purchase price will automatically be credited to DCWF at no cost to you. When the amount of money to be donated to DCWF from all the purchases made with this charity selected by the shoppers reaches \$1,000, we (DCWF) will receive a check from Amazon.

The more shoppers that choose this method of shopping at amazon, the more the DCWF will receive!

---

## **Deep Creek Watershed Foundation Sipside Event**

DCWF hosted our second event at Sipside Lounge this year on Monday, June 20th in Oakland. The event was a sellout again this year. We appreciate the support of all our followers and all our donors! **You once again have shown your support for our foundation and the work we do**





to maintain and improve our watershed area. This fun evening raised over \$5000 for the Foundation. Thank you!

Entertainment was by Friendsville's Beyond Primitive. They presented a wonderful array of music! Everyone enjoyed their beautiful harmonies!

The barbeque dinners were prepared and hosted by JG's Pub. It was a difficult time for owner, Kate and we certainly appreciated her support in making the evening successful.

Lastly we want to thank Pat & Barb Franc along with their staff for their hospitality and continual support for the Deep Creek Watershed Foundation. It was a delightful evening for all!



## WATER-WISE GARRETT COUNTY OFFICIALLY UNDERWAY

The first landscape in Garrett County has been certified as Water-Wise, an exclusive program of University of Maryland Extension, which highlights properties that are installing best management practices to promote water conservation, native plants, stormwater management, and much more! Richard (Dick) and Betsy Potts are a great garden match for the first certification in Garrett County, as Betsy is a co-Vice President of the Mountain Laurel Garden Club and Dick is a Garrett County Master Gardener. Their garden is located on Lake Shore Drive and highlights many native plants, as well as tiered beds, and stunning containers.

The program is based on the popular Bay-Wise Conservation Landscape Program.

The goal of Water-Wise is to encourage homeowners to implement and maintain



Pictured Dick and Betsy Potts

Water-wise was created in early 2019 and Master Gardeners were trained then; however, due to Covid-19 restrictions, the actual roll-out to the public has been slower than anticipated. The program was created in partnership with the following: Garrett County Watershed Coordinator, several DNR Representatives, University of Maryland Extension Faculty, University of Maryland Master Gardener Program Volunteers, Garrett College, Mountain Laurel Garden Club, Western Mountains

conservation landscaping in their lawn and gardens. In order to qualify for this designation, interested landowners need to complete an electronic application, go through the yardstick and get at least 36 inches or points. The yardstick outlines many possible actions that homeowners are completing in their yard. Once the homeowner has done both of those actions, a Master Gardener will come out to the home and go through the yardstick and check off the 36" and award a small, blue metal sign to display in their yard. Once more people are certified, a county map will be created to show where landscapes are located.

Chapt. of MD Native Plant Society. We also had several funding **partners**: Garrett County Government, **Deep Creek Watershed Foundation**, and the University of Maryland Extension.

If you are interested in learning more about the program or would like to have a yardstick printed and mailed to you, please call Ashley at 301-334-6960 or email [abachtel@umd.edu](mailto:abachtel@umd.edu).

## LAUNCH STEWARD PROJECT

The Deep Creek Watershed Foundation has purchased rain jackets, long sleeve ¼ zip sweatshirts, flashlights, and extendable mirrors for the Garrett College Launch Steward Program with part of a grant we received from the Jayne Koskinas Ted Giovanis Foundation for Health and Policy.

The Deep Creek Lake Launch Steward Program is a partnership between the Maryland Dept. of Nat. Resources (Park Service) and Garrett College's Natural Resources and Wildlife Technology Prog. (NRWT). Students from this program are employed to conduct inspections of vessels launching in two local state parks: Deep Creek Lake and Rocky Gap.



The apparel has "Launch Steward" screen printed on the back and the logos of Garrett College and Deep Creek Watershed Foundation on the front.

The students, who are trained to conduct inspections of vessels for Aquatic Invasive Species (AIS), are specifically looking for hydrilla, an invasive weed that is found nationwide and zebra mussels that cling to boats and other watercraft.

Our donations should help these students to be more comfortable while doing this important work, and to be more accurate with their searches with the supplied equipment.

---

**NEXT -  
SEE 3 IMPORTANT ARTICLES FROM OUR DIRECTOR OF  
PROJECTS: MORGAN FRANCE**

## **WATER BUDGET MODEL COMPLETION**

In early 2017 the foundation entered into a contract with Century Engineering, Inc. Baltimore office, to create a Water Budget Model (WBM) for the equitable distribution of the waters of Deep Creek Lake to the stakeholders. The 2017 model was based on the amount of water remaining above the Lower Rule Band and the permit required releases from the lake through the power plant. A more robust model that includes a direct measurement of the water out, a ground water recharge model based on precipitation records, and the water level data from the gauge that the foundation currently supports, will complete the water budget model.

Currently the model relies on a bookkeeping scheme that keeps track of the required releases and the amount of water available in the pool. It is very useful because it can be updated every day and a prediction made of the number of days remaining until the lower rule band is reached.

Two more continuously recording precipitation gauges in the watershed to augment the precipitation gauge at North Glade Run, and discharge records available real time from the power plant will afford the data to construct a ground water recharge model for the lake basin. The recharge model will extend the predictable lake levels from days to weeks, and perhaps months.

We have a proposed contract for the addition of the precipitation recording capability to be added to the Hoyes Run United States Geological Survey (USGS) flow gauge on the Youghiogheny River. USGS is in the process of providing a priced proposal to install a river flow gauge upstream of the Deep Creek nexus with the Youghiogheny River and a priced proposal to install a precipitation gauge farther up in the Cherry Creek drainage area to afford better precipitation records.

The WBM completion hinges on the ability to evaluate the simple relationship of Water In Minus Water Out Equals change in water level... Easy to say, but gathering the input data will require a precipitation record over the lake recharge area, discharges from Deep Creek and the power plant into the river, and a record of water levels, all retrievable from a digital data base.

Our long-term goal is to use the Water Budget Model as a basis for a water level management plan. Once the recharge model is incorporated a predictive capability will afford the ability for the Water Appropriation Permit to equitably allocate the use of the water that comes into Deep Creek Lake.

---

## **WINTER WATER LEVELS**

In the past the Property Owners Association has requested that water levels be reduced over winter to afford the adjoining residents the opportunity to provide shoreline protection at their own expense. Other benefits include sheet flow sediment transport away from the shoreline and dock locations. Washing away the sediment will reduce the proliferation of submerged aquatic vegetation around the docks. Positive and negative impacts from past winter water levels reductions have not been reported.

The Maryland Department of the Environment (MDE) has announced that the power plant operator will not lower the water levels in the lake this winter. One



of the reasons offered is that the oxygen in the air will activate the mercury metal contained in the sediment. As a result, when the water level comes back up, the mercury will dissolve into the lake water.

Mercury has been accumulating in the lake throughout its history. From the middle of the twentieth century, the coal-fired power plants in the Ohio River basin put a lot of mercury in the air that ended up in the lake. Once the mercury enters the lake, it has no way out except to be absorbed in the lake fish. Deep Creek Lake fishermen are warned to limit their consumption of lake-caught fish.

A second reason for the reluctance to lower water levels in winter is that the lake will not fill up by the end of May. However, lake-level records over many years do not support this notion. What matters is how much water is let out early in the season. Once MDE incorporates the groundwater recharge model into the lake water appropriation methodology, there will be an excellent scientific basis for managing equitable water distribution.

The foundation supported a literature search regarding Water Drawdown Efficacy and Implications. You can review this at [our website](#).

Some advantages to the management of Deep Creek Lake include the benefits described in the literature search, the reduced effort to improve shoreline protection, and the sheet-flow sediment transfer away from the dock area during low water level rain runoff and snow melt.

After consultation with other stakeholders and regulatory agencies, the foundation will discuss this subject at a future board meeting.

---

## **WATER QUALITY**

Measuring water quality in the watershed is one of the Foundation's primary goals. Currently, we are working with California University of Pennsylvania to do a water quality study of all of the estimated twenty-two tributaries to Deep Creek Lake. The study will identify potential remedial projects in the watershed. We expect results by this September.

The Foundation will pursue any remedial water quality projects identified in the tributaries. We are always interested in projects to reach the goals of the watershed management plan.

We are working with the West Virginia Water Research Institute to add the water quality data we're collecting into the WATERS database. WATERS is an electronic repository for water quality data.

The Foundation has the water quality data from the meters donated to DNR for 2021. The data is available on our website. We understand that DNR has deployed the meters for this season.

---

## **VIRTUAL BRUNCH AND LEARN:**

The Deep Creek Watershed  
Foundation is pleased to offer the

2022 Virtual Brunch and Learn Educational Series, facilitated by University of Maryland Extension in Garrett County. Each session will begin at 10am and is free and open to anyone that is interested in learning more about Deep Creek Lake and surrounding watersheds. Registration is required prior to each event so look for upcoming information.



#### UPCOMING SESSIONS:

- Forestry Applications of sUAS (Drones) in Garrett County (*September 28<sup>th</sup>*): with Forester Melissa Nash speaking. To read more about this session, [Click Here](#) - [Register here](#)
- Submerged Aquatic Vegetation (October 26<sup>th</sup>): Julie Bortz with MD DNR will provide a background introduction to Submerged Aquatic Vegetation (SAV) biology and the importance to the lake ecosystem. [Register Here](#)

#### PRIOR PRESENTATIONS:

These presentations are on the [Deep Creek Watershed Foundation Web Site](#) and also available on [YouTube](#):

- Watershed Update from the Deep Creek Administrative Council (June 22<sup>nd</sup>)
- Function and Maintenance of your Sewage Disposal System (May 25<sup>th</sup>)
- Fisheries Management on Deep Creek Lake (March 24<sup>th</sup>)
- The Deep Creek Watershed Foundation Brunch & Learn 2021: Session 2- Lake Management, Shoreline Erosion, Buffer Strip Information, and Dock Do and Don't
- The Deep Creek Watershed Foundation Brunch & Learn: Session 1 - What organizations represent Deep Creek Lake's Stakeholders and who governs the lake?



**Photo Caption:** Leah Shaffer, CTF Executive Director, Robert Hoffmann, DCWF President, Morgan France, DCWF Director of Projects

### CTF Grant Supports a Thriving Environment

Community Trust Foundation (CTF) through the Kim & Marion Leonard Mindful Leadership, Health, Wellness, and Environmental Preservation Fund has awarded a grant to the Deep Creek Watershed Foundation to support the continuous monitoring of Deep Creek Lake water levels and temperatures by the US Geologic Survey (USGS).



The Deep Creek Watershed Foundation (DCWF) was established to preserve and protect the lake and its watershed, which are valuable resources in Maryland for outdoor recreation and are the backbone of the \$360.5 million tourism industry in Western Maryland. Temperature and water level are critical for assessing water quality and its vibrant sustainability.

In 2020, a grant from CTF defrayed the cost of installing the gauges and the first year of calibration. The monitoring devices are part of the Deep Creek Watershed Management Plan developed in collaboration with private citizens and county and state officials.

CTF is a public foundation created with gifts from donors committed to causes in Allegany, Garrett, and Mineral Counties. CTF grants to local nonprofit organizations working to build a stronger community in the areas of Arts & Historical Preservation, Health & Wellness, Vibrant Communities & Thriving Environment, and Education & Youth Leadership. CTF connects philanthropy with community good, for more information visit [www.ctfinc.org](http://www.ctfinc.org) or call 301-876-9172.

---

## Hope to See You at these Upcoming Events!

*Sat., Aug. 20<sup>th</sup>    Wings and Wheels*

*10:00 AM to 3:00, Garrett Co. Airport*

*Tues., Sept. 13<sup>th</sup>    6<sup>th</sup> Anniversary Celebration/ DCWF*

*5:30 PM to 9:30 PM, Red Barn Inn*

*Sat., Sept. 17<sup>th</sup>    The 150<sup>th</sup> Anniversary for Garrett Co.*

*10:00 AM to 6:00 PM, Garrett County  
Fairgrounds*



### Become a Sustained Donor

**The Deep Creek Watershed Foundation works every month, year-round, and your tax deductible gift can too.** For as little as \$10 a month, when you become a Sustained Donor as many have done, you can help us keep the lake and the watershed as great as it is now. Our Sustained Donors program allows monthly contribution as an alternative to giving once a year.

You can find details under the "Support Us" tab on our webpage

([www.deepcreekwatershedfoundation.org](http://www.deepcreekwatershedfoundation.org)).

There you will see the Sustained Donor levels:

Bronze is \$10 a month

Silver is \$20 a month

Gold is \$50 a month

Platinum is \$75 a month

Diamond is \$100 a month

Elite is \$150 a month

Whatever level you choose, We Thank You!

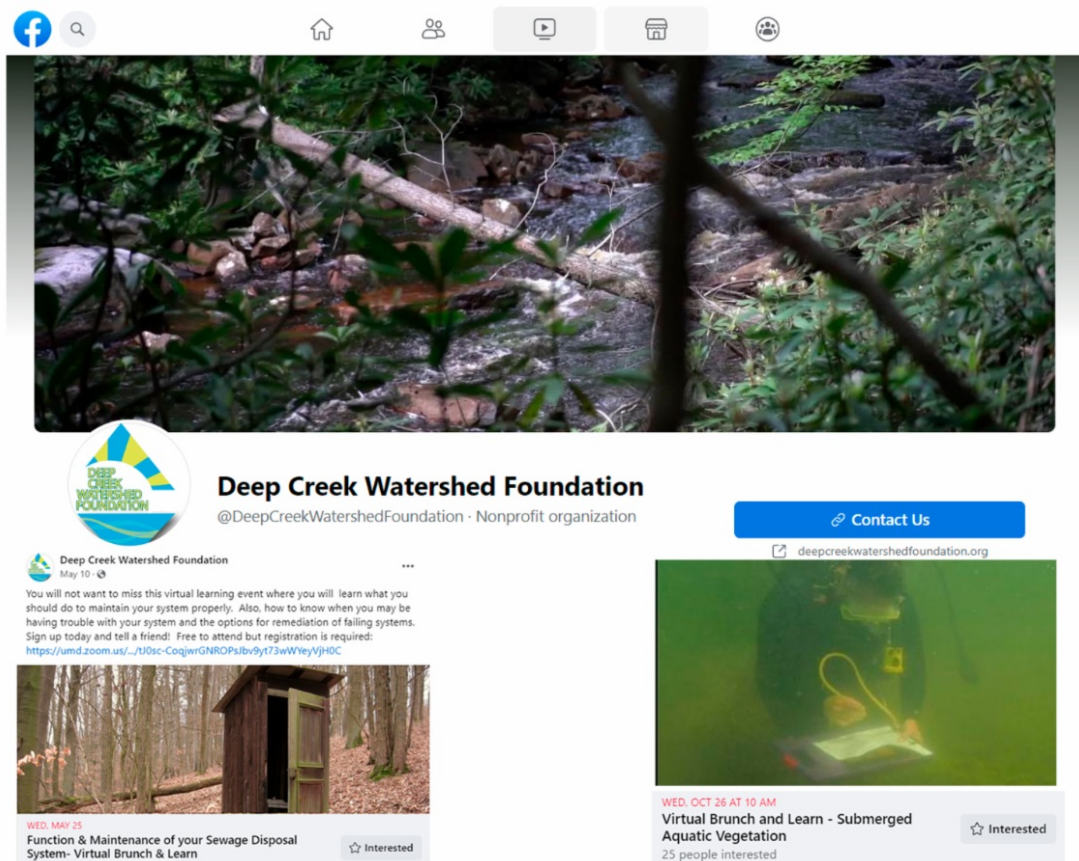
---

## Follow and "Like" us on Facebook

Our Facebook page features our marvelous videos and other important projects and events in which we are involved.

You can also donate through our page.

[Click here to Follow us on Facebook!](#)



## Learn About our Projects on the DCWF Website

Our Board members have been talking with HOAs in the watershed and other groups about the work of the Foundation, and asking about projects that the



Foundation might consider funding. If you have a group that wants us to visit and present our information, and have us hear your suggestions for watershed projects we might fund in the future, please let us know by contacting [Morgan France](#).

## Our Funding & How We Choose Our Projects

Each of our projects is chosen in accord with the recommendations of the Deep Creek Watershed Plan. The Plan can be found at [www.garrettcountry.org/watershed/dcwmp](http://www.garrettcountry.org/watershed/dcwmp).

Each project is closely examined by the people who make up our Board of Directors, and they make the selection of each project for funding. Each member of our Board of Directors, and each of our advisors, is a volunteer who has a strong connection to the Deep Creek Watershed. Their varied backgrounds and expertise make the Board of Directors and the advisors a highly effective organization for funding projects in the Deep Creek Watershed. The Board members and advisors are all profiled in our website, [www.deepcreekwatershedfoundation.org](http://www.deepcreekwatershedfoundation.org).

Our investments in these and future projects are possible because of the generous, tax deductible gifts we get from those of you around Deep Creek Lake, throughout the Deep Creek Watershed and beyond.

Your contribution to the Foundation now at [www.deepcreekwatershedfoundation.org](http://www.deepcreekwatershedfoundation.org) will be a great investment in the terrific private-public water quality monitoring effort and the other projects funded by the Foundation.

**Please consider a tax deductible contribution to support these important activities.**

[Click here to donate.](#)

Deep Creek Watershed Foundation | P. O. Box 376, Oakland, MD 21550

[Unsubscribe julialhoffmann@gmail.com](#)

[Update Profile](#) | [Constant Contact Data Notice](#)

Sent by [byrahoffmann93@gmail.com](#) powered by



Try email marketing for free today!